

# Shelter-in-Place for Chemical Hazard

If told **not to evacuate** or it is too late to evacuate

When disaster strikes, it may be safer to stay in your home, place of employment, or other location. Learn where to go, what to do, and how long you should shelter-in-place for the hazards in your area.

Chemical agents are poisonous vapors, aerosols, liquids and solids that have toxic effects on people, animals or plants.

## Take Additional Safety Measures

Go inside as quickly as possible. Bring any pets indoors.

Lock all doors and windows for a better seal.

Turn off the air conditioner or heater, all fans, close the fireplace damper and any other place that air can come in from outside.

If available, tape plastic over window(s) in the internal room you are

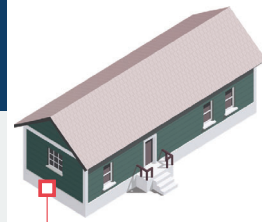
sheltering. Use duct tape around the windows and doors and make an unbroken seal. Tape over vents and seal any electrical outlets.

Do not drink water from the tap. Stored water will be safer.

Listen for current emergency information and instructions from authorities.

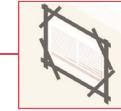
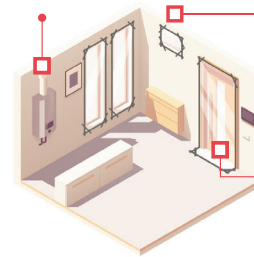
Visit <https://community.fema.gov/ProtectiveActions/s/> for more information.

## If you are in a **Manufactured or Mobile Home**



Stay inside your home. Lock windows and doors for a better seal.

Turn off all fans, heater or air conditioner.

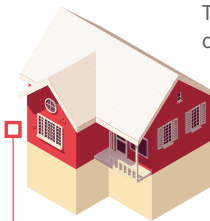


Use duct tape around the windows and doors and make an unbroken seal.



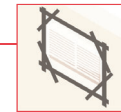
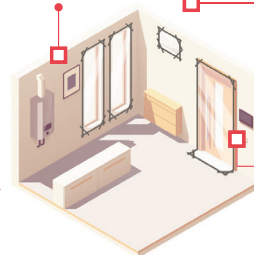
Tape plastic over any windows in the room.

## If you are in a **1- or 2-Story Building** May have an attic and/or basement



Stay inside your home. Lock windows and doors for a better seal.

Turn off all fans, heater or air conditioner.

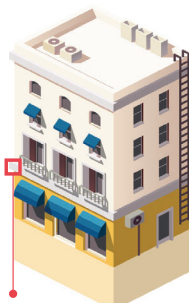


Use duct tape around the windows and doors and make an unbroken seal.



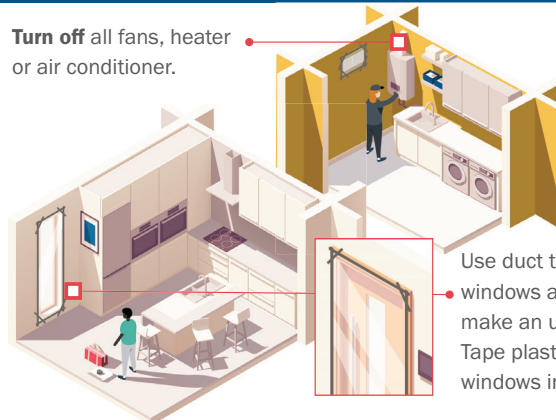
Tape plastic over any windows in the room.

## If you are in a **Multistory Building** Includes schools, apartments, and offices



Stay inside your home. Lock windows and doors for a better seal.

Turn off all fans, heater or air conditioner.



Use duct tape around the windows and doors and make an unbroken seal. Tape plastic over any windows in the room.

## How long to shelter-in-place?



A shelter-in-place will last approximately 12 hours or less, rarely will it go longer.



FEMA