

Shelter-in-Place for Nuclear/Radiological Event

When disaster strikes, it may be safer to stay in your home, place of employment, or other location. Learn where to go, what to do, and how long you should shelter-in-place for the hazards in your area.

Nuclear explosions can cause significant damage and casualties. Exposure to dangerous radiation falling to the ground can cause severe illness. Radioactive fallout generally begins to collect about 10 minutes after the explosion. This gives you time to find adequate shelter.

Get In, Stay In and Tune In.

Get inside the nearest building to avoid radiation. Brick or concrete are best. Bring any pets indoors.

Go to the basement or middle of the building. Stay away from the outer walls and roof.

Close and lock all windows and doors. Turn off units that bring in air from the outside.

Stay inside for 24 hours unless local authorities provide other instructions.

Listen for instructions from authorities.

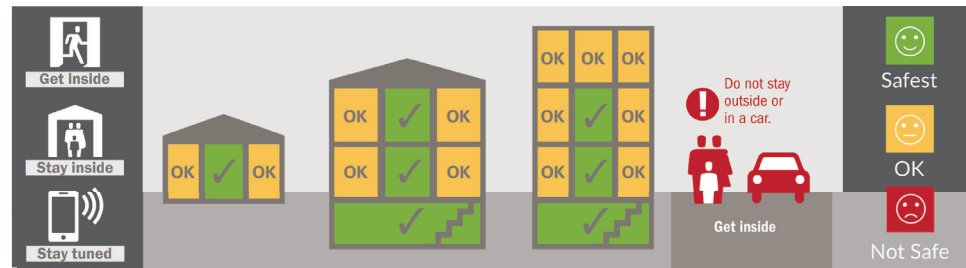
Take Additional Safety Measures

Remove contaminated clothing and wipe off or wash unprotected skin if you were outside after the fallout arrived.

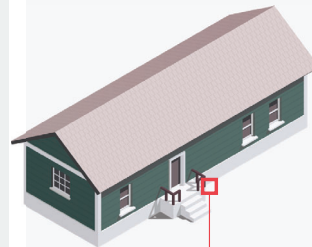
Family members and caregivers should not leave to get their children. Schools/Day cares have plans and are caring for your children. Reunite later to avoid exposure to dangerous radiation.

Visit <https://community.fema.gov/ProtectiveActions/s/> for more information.

Get In, Stay In and Tune In.



If you are in a Manufactured or Mobile Home



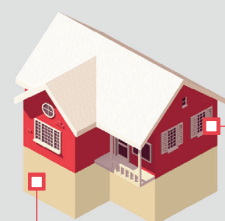
If you cannot make it to a brick or concrete structure, shelter in the middle of the structure.



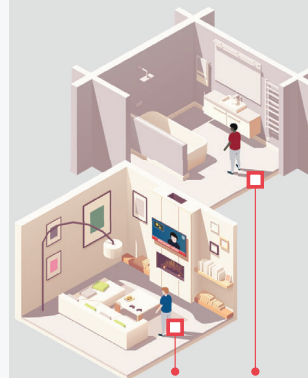
Stay away from the outer walls, windows and roof.

If you are in a 1- or 2-Story Building

May have an attic and/or basement



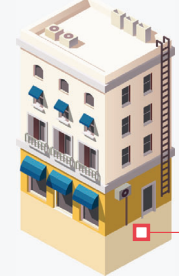
Basement or lowest level in the structure. If you don't have basement, take shelter on the first or middle floor.



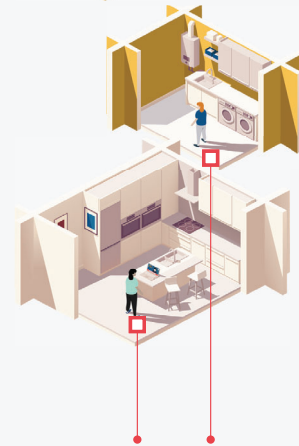
Stay away from the outer walls, windows and roof.

If you are in a Multistory Building

Includes schools, apartments, and offices



Basement, parking levels or other lowest level in the structure



Stay away from the outer walls, windows and roof.

How long to shelter-in-place?



Stay inside for 24 hours unless authorities provide other instructions, or your building is threatened by fire or collapse.

Tune into any communication channel or media available for official information on when it is safe to exit and where you should go.



FEMA